

KEYCREATOR[®] 2011

NEW FEATURES
AND
BENEFITS

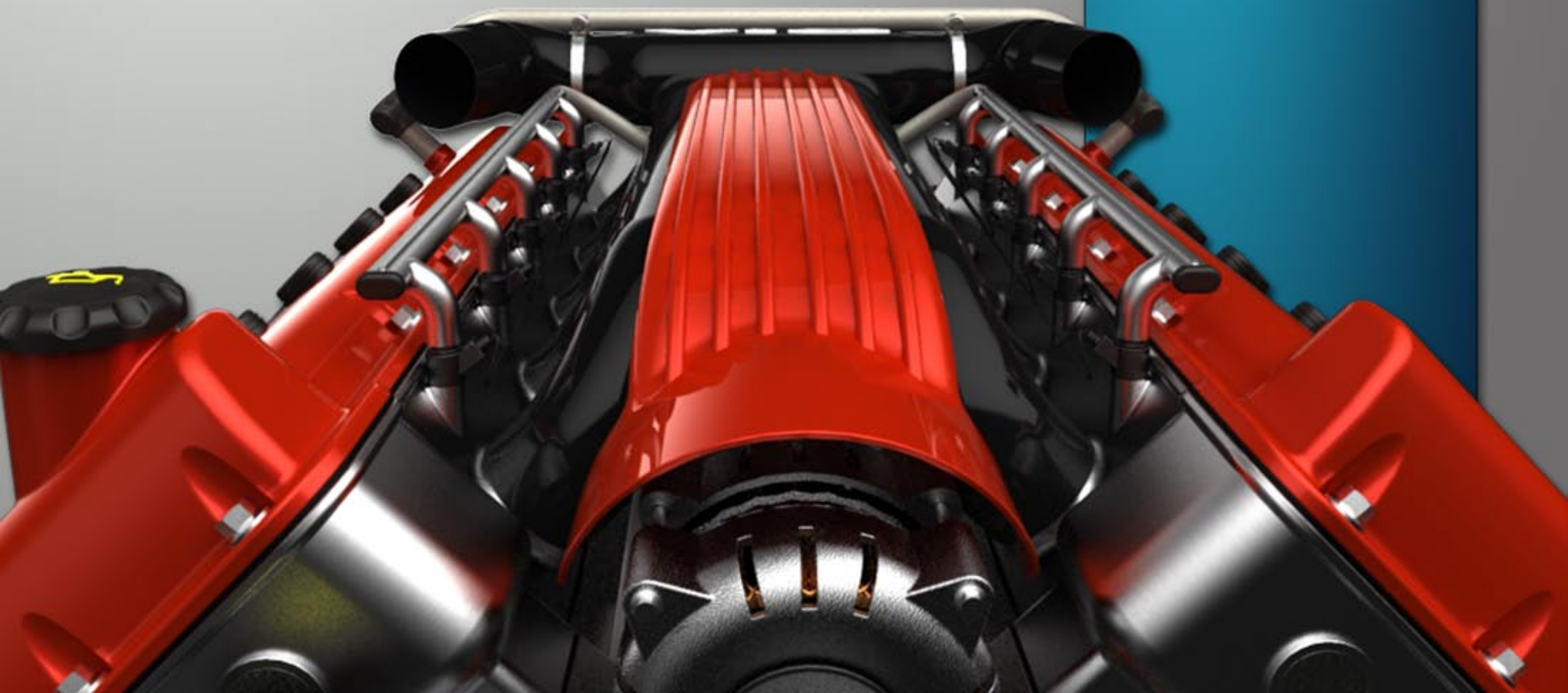




Table of Contents:

64-Bit ————— 3

Windows 64	3
Desktop Composition Compatible	3

Dynamic ————— 4-9

3D DynaHandle	4
Dynamic Modify Face	5
Dynamic Modify Face Examples	5-7
Dynamic Linear Array	8
Dynamic Freeform Array	9

Interoperability ————— 10-12

New IGES Translator	10
Hoops 3DX Translators	10
PDF Export Enhancements	10
Read Assembly Tree	11
Autodesk Inventor 2011	12
ACIS 21	12
PTC Wildfire 5	12
Dassault Systèmes Solidworks 2010	12
Dassault Systèmes CATIA V5 R20	12
Siemens NX 7	12

Minor Enhancements ————— 13-19

New Hoops Version 18.1	13
Added Tables To Structural Shapes	13
Improved Boolean Operations on Sheetbodies	13
Graphics Card Test Function	14
Cutting Plane Improvements	14
Clean Entities	15
Primitive Block Anchor Points	15
Merge Option For Solid Creation	15
Deform Curve	16
Dynamic Transform	16
Improved Fastener Washer & Nut Placement	17
Restyle Tolerance	17
Improved Instance & Section Scaling	18
Improved Auto-Label & Hole Table	18
Improved Layout Dialog	19



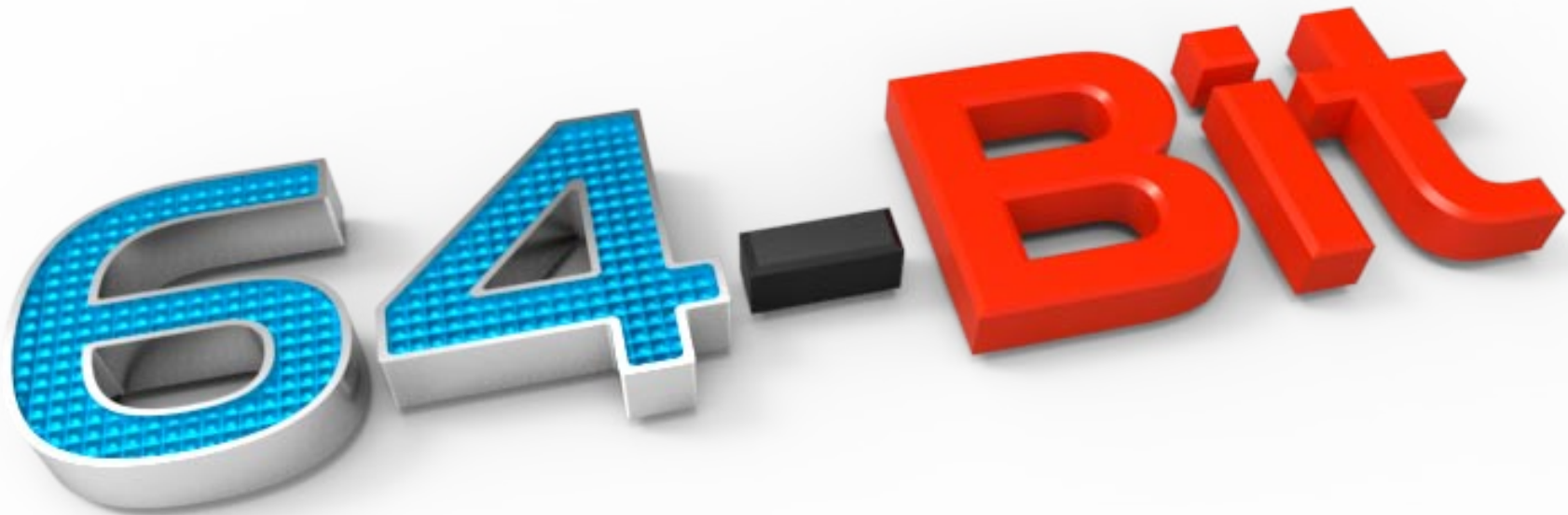
64-Bit

KeyCreator 2011 is the first fully 64-bit version of KeyCreator. Being 64-bit allows KeyCreator access to all of the memory resources on a PC - ignoring the 2-4 GB ceiling imposed by Windows on 32-bit programs. This Windows ceiling on 32-bit programs has effectively limited KeyCreator file size to around 200 MB for most users. That limit could be raised as high as 500 MB using special configurations or Windows 7 64-bit. KeyCreator 2011 file size is now only limited by the amount of memory available on the PC.

A 32-bit version of KeyCreator 2011 remains available for users not running a 64-bit version of Windows or with limited amounts of RAM (less than 4 GB).

Desktop Composition Compatible

KeyCreator 2011 is the first KeyCreator version to be fully compatible with the translucent toolbars which are part of the Aero style interface elements introduced in Windows Vista.

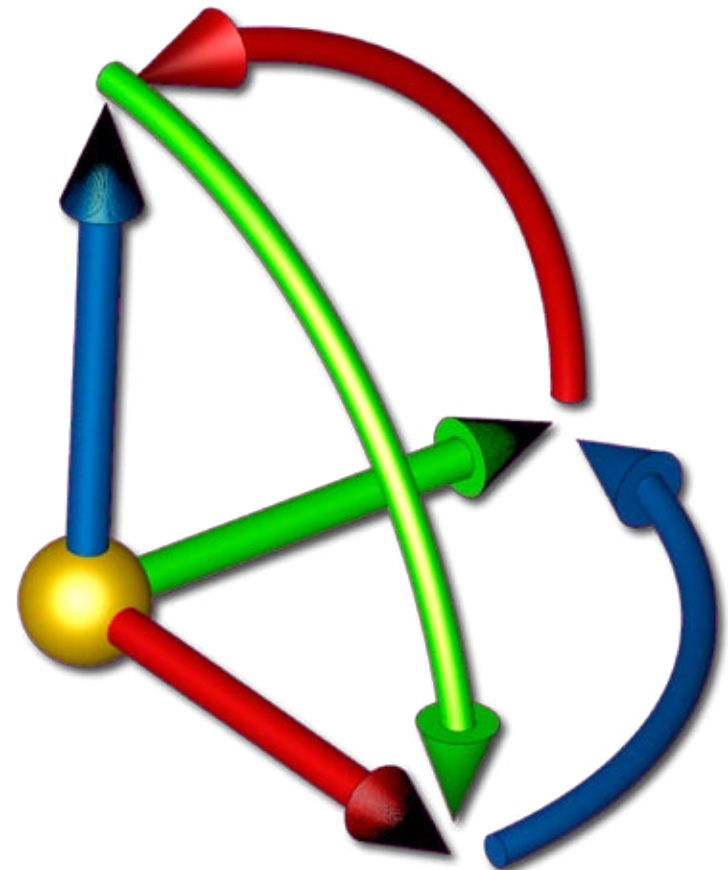


KeyCreator 2011 requires a new license which will enable the 64-bit and 32 bit versions

Dynamic

3D DynaHandle

- Redesigned shape
 - Improved selection
 - Improved control
 - Expanded Right Mouse Button Menu options (RMB)

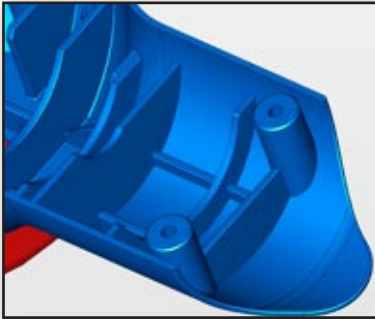


Dynamic Modify Face

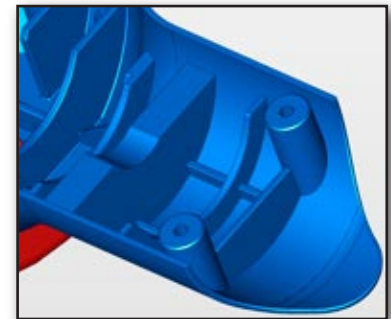
The new Dynamic Modify Face function provides an intuitive 3D DynaHandle for quickly modifying a set of selected faces. Offset or Transform option give this function multiple applications.

- Dynamic Push Pull freedom
- Position geometry precisely without worrying about constraints
- Ability to Add and Remove faces/features from modification
- Align DynaHandle to Vector/Plane
- Align selection to Vector/Plane

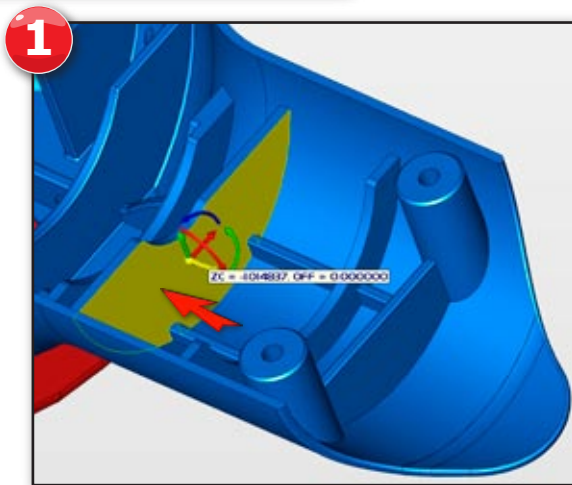
Before



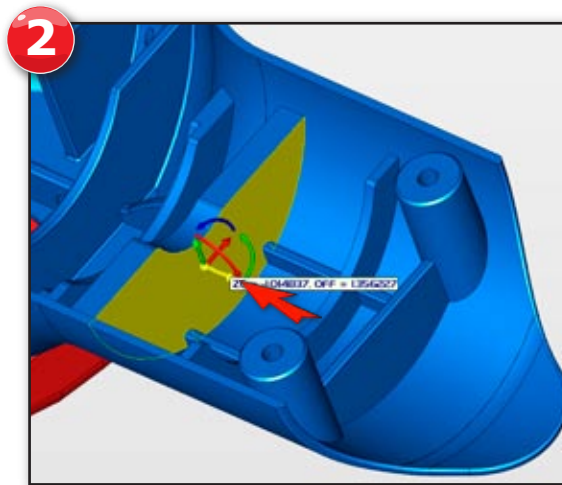
After



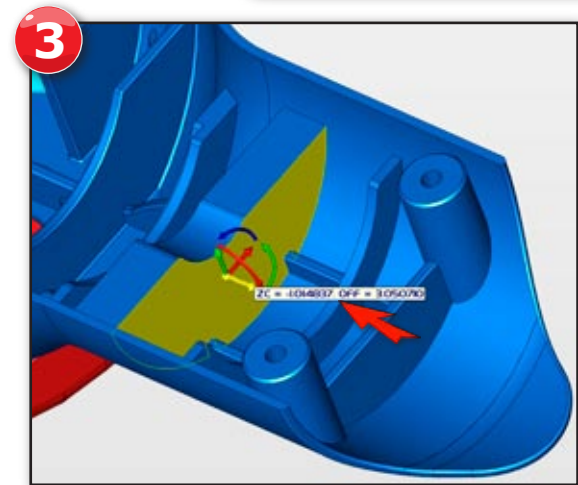
Dynamically moving a face example:



Select face(s)



Select handle and drag

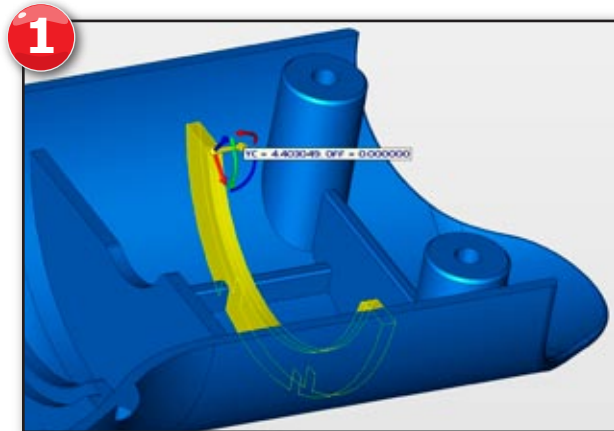


Drag face until desired thickness

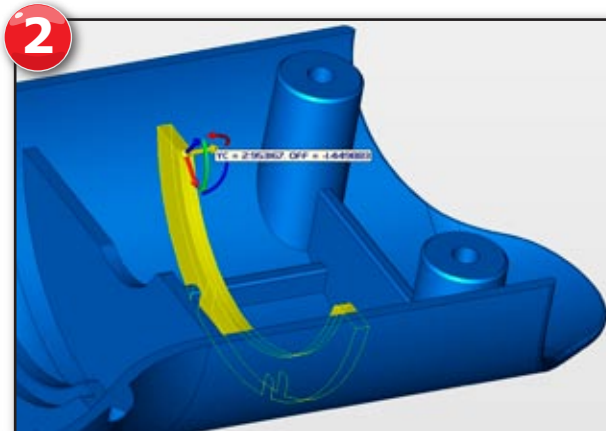


Dynamic Modify Face cont.

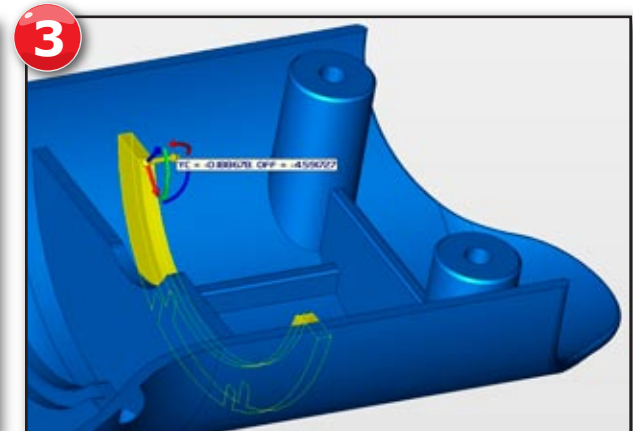
Dynamically moving a feature:



Select feature

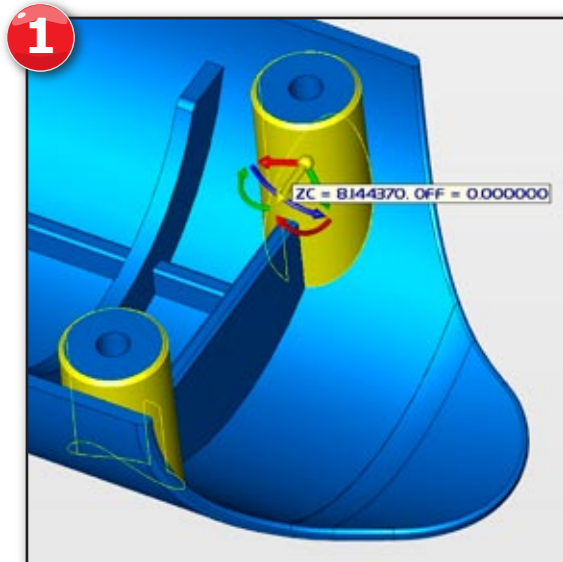


Select handle and drag

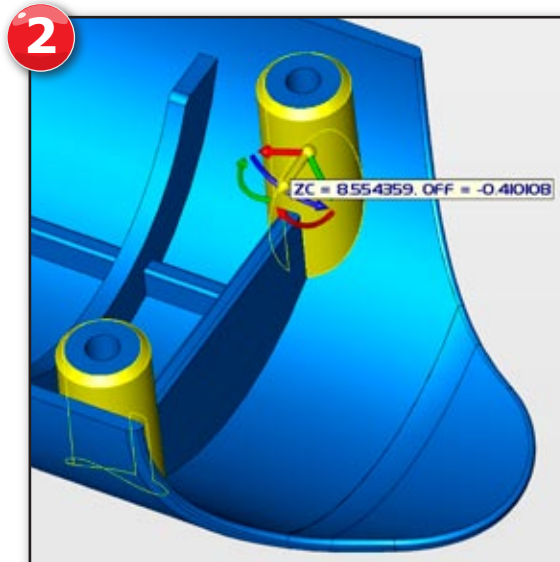


Drag feature until desired location

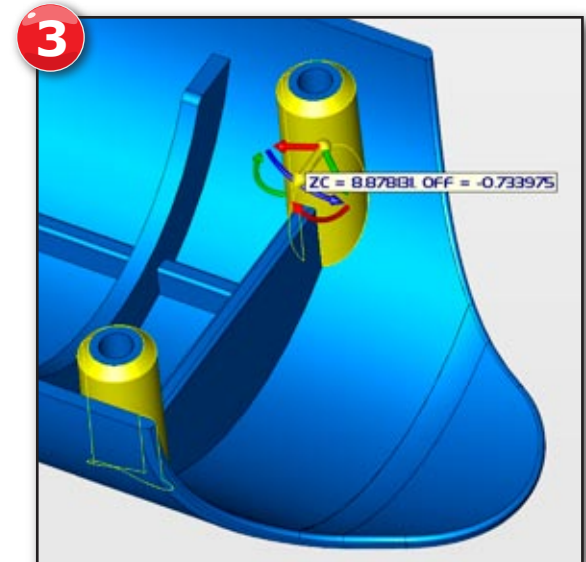
Dynamically moving multiple faces of 2 features at the same time:



Select faces



Select handle and drag

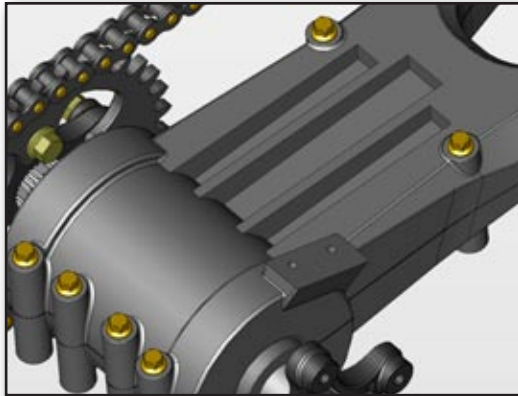


Drag faces until desired thickness

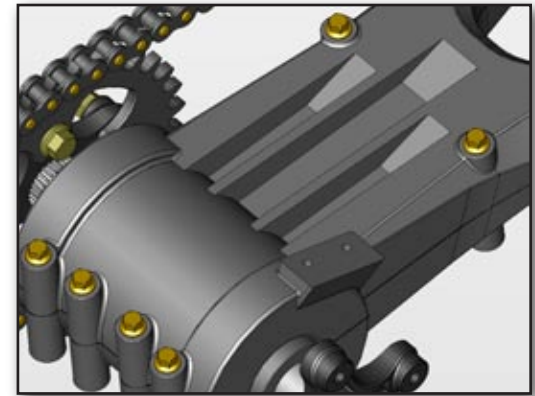


Dynamic Modify Face cont.

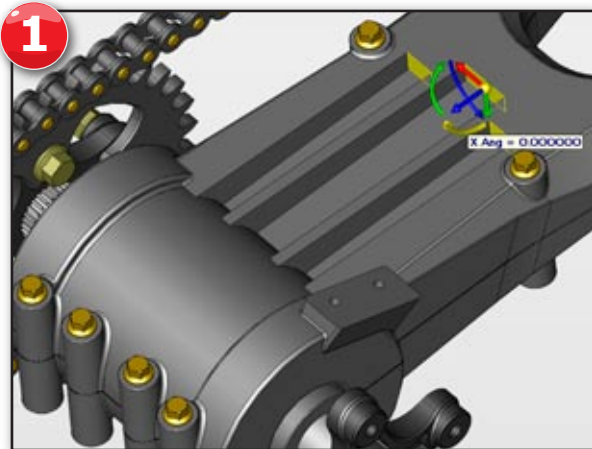
Before



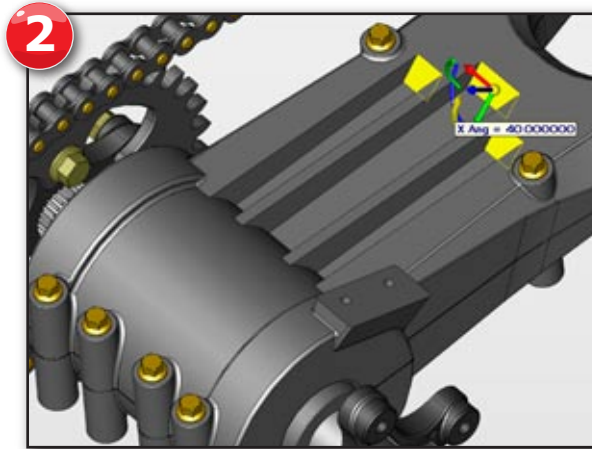
After



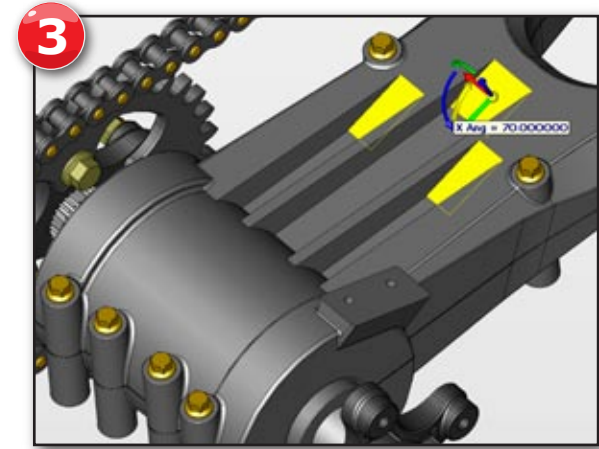
Dynamically change the angle of multiple faces example:



Select faces



Select handle to change angle and drag

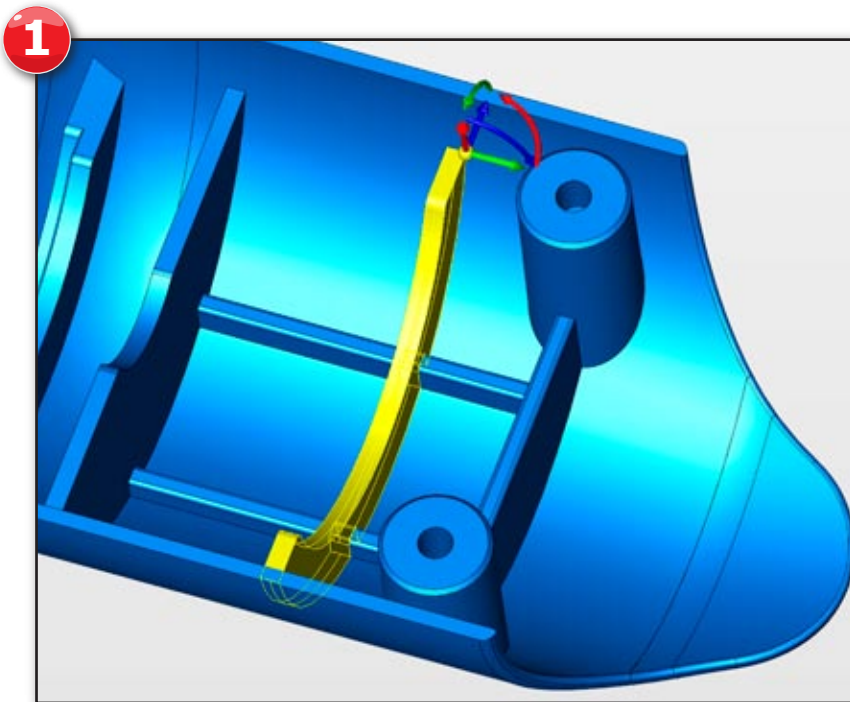


Drag faces until desired angle

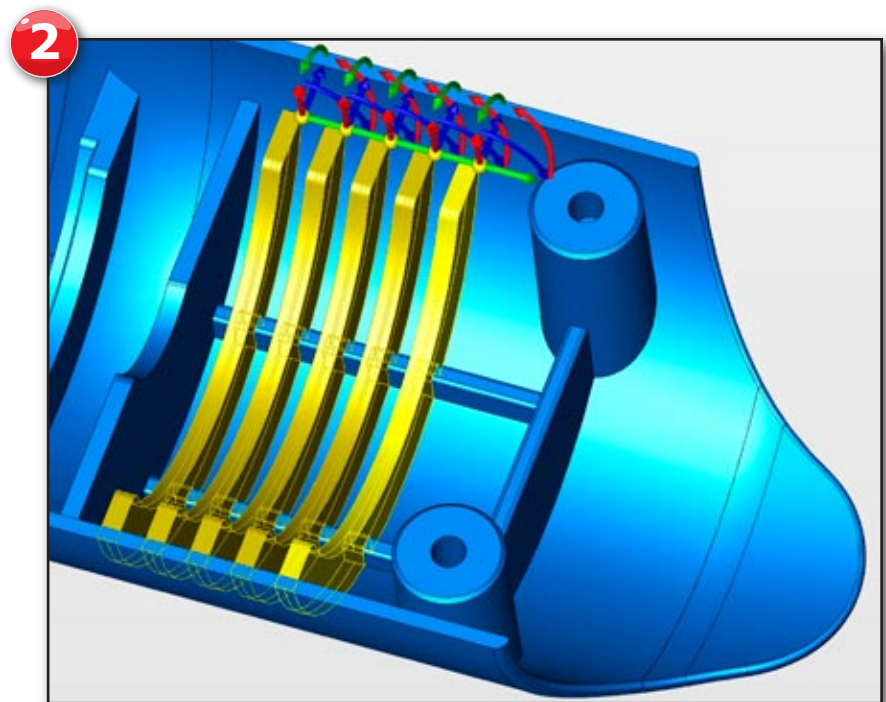
Dynamic Linear Array

The new Dynamic Linear Array function provides the 3D DynaHandle for quickly creating copies of geometry.

- Modify any location dynamically
- Select any geometry to be transformed (Solids, wireframe, fasteners, etc.)
- Preview option toggle
- Freeform option to tweak individual DynaHandles



Select feature to copy



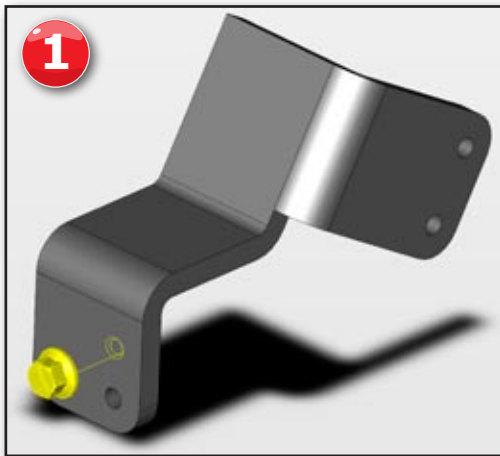
Select handle and drag



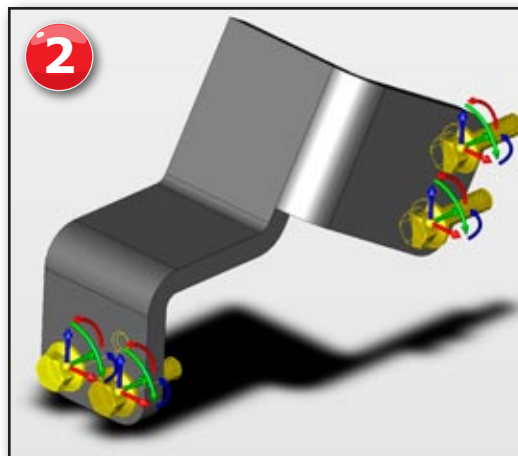
Dynamic Freeform Array

The new Dynamic Linear Array function provides the 3D DynaHandle for quickly coping geometry in any orientation or location dynamically.

- Modify any orientation/location dynamically
- Select any geometry to be transformed (Solids, wireframe, fasteners, etc.)
- Preview option toggle
- Manipulate any individual DynaHandle copy



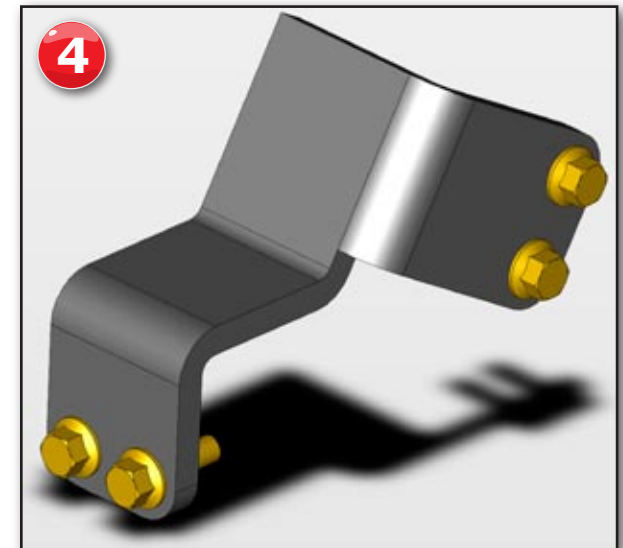
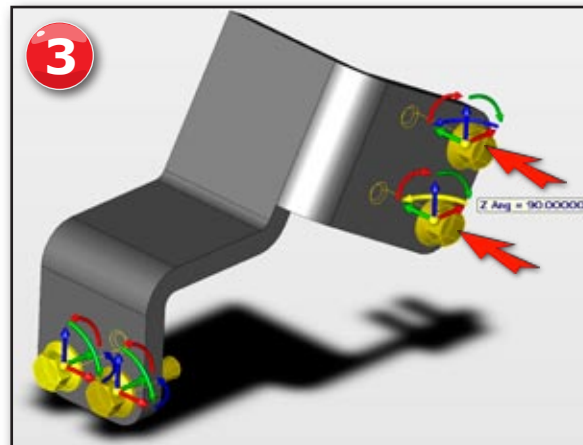
Select object to copy



Place copies at desired locations

Once the object is at the new locations you can modify individual copies while still in the function.

(In this example the angle on the top 2 right bolts are changed)



Finished copies



Interoperability

New IGES Translator



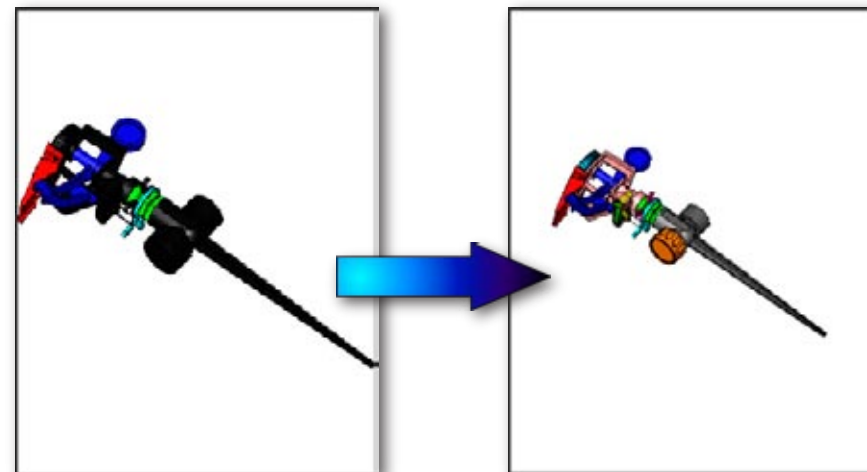
- Import & Export
 - Adds support for PMI data, additional types of details, and special entity types such as cylinders and sphere
 - Exports part references as an assembly
 - Significantly improved file read and write times, handling of large files

Hoops 3DX Translators

- Import
 - Product Manufacturing Information (PMI) with the 3D model
 - CATIA V5, I-DEAS, JT, NX (Unigraphics), Pro/ENGINEER, & SolidWorks

PDF Export Enhancements

- Both 2D & 3D
 - Margins Added (Top, Bottom, Left, Right)



- Allows specific selection & opening of assembly items
- Works on non-native file format that support assemblies
- Reads in geometry on demand
- Load Children and Load All options

- Allows specific selection & opening of assembly items
- Works on non-native file format that support assemblies
- Reads in geometry on demand
- Load Children and Load All options





Autodesk Inventor 2011

Support for the Inventor IPT and IAM file formats from Autodesk have been enhanced to read version 2011, the latest version of the format.

ACIS 21

Support for the ACIS SAT and SAB file formats from DS Spatial have been enhanced to read and write version 211, the latest version of the format.

PTC Wildfire 5

Support for PTC Wildfire has been enhanced to read version V5, the latest version of the format.

Dassault Systèmes Solidworks 2010

Support for Dassault Systèmes Solidworks has been enhanced to read version 2010, the latest version of the format.

Dassault Systèmes CATIA V5 R20

Support for Dassault Systèmes CATIA has been enhanced to read version 5 R20, the latest version of the format.

Siemens NX 7

Support for Siemens NX has been enhanced to read version 7, the latest version of the format.



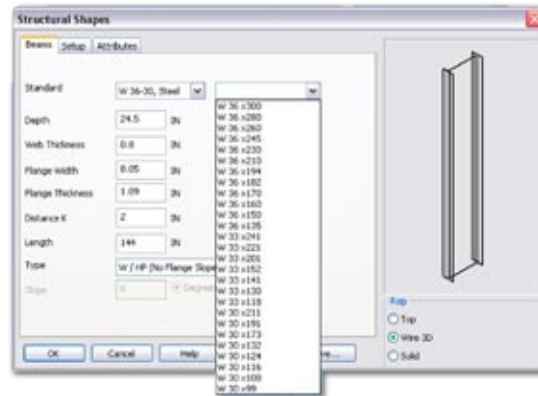
Minor Enhancements

New Hoops Version 18.1

- Dramatically improved highlighting performance of individual faces

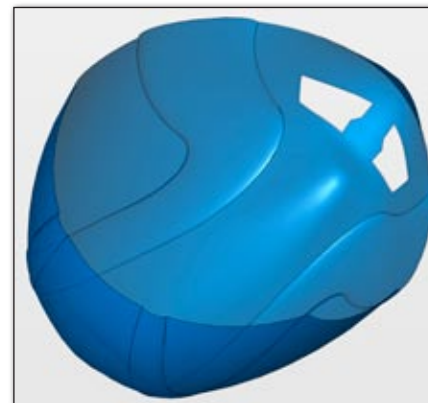
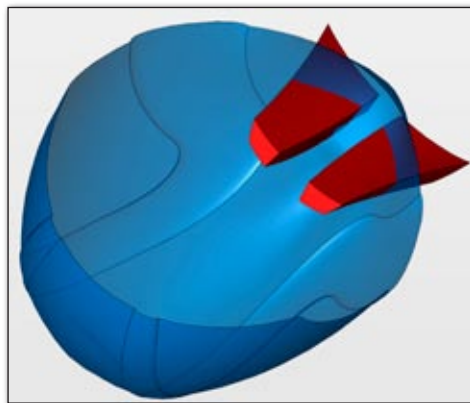
Added Tables To Structural Shapes

- Easy to use
- I-beams
- T-beams
- Channels



Improved Boolean Operations on Sheetbodies

- Greater flexibility
- More productive



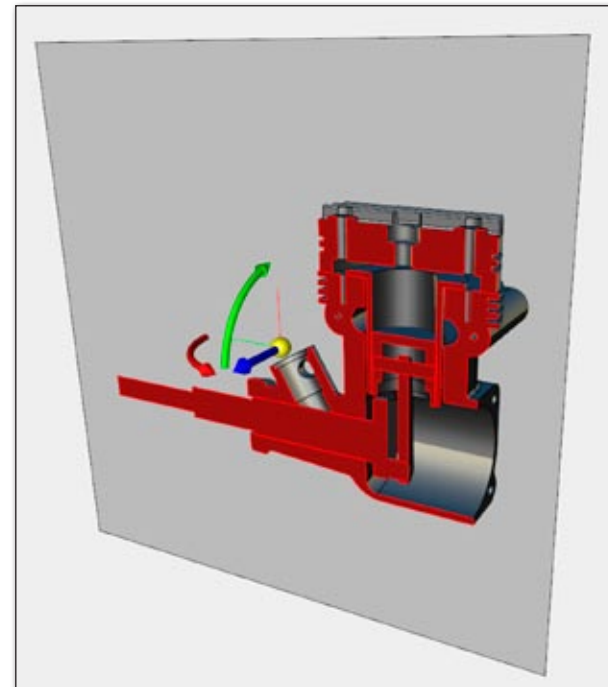
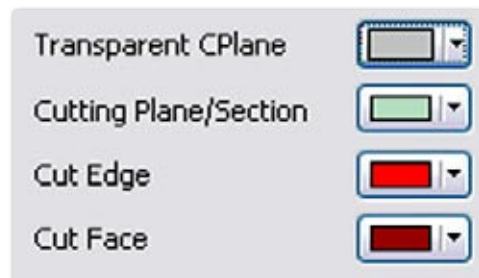
Graphics Card Test Function

- Runs a standalone test provided by TechSoft
- Validates that the graphics card meets a minimum level of functionality to be considered supported
- Runs test based on 2 Driver Types settings:
 - Hardware OpenGL
 - Direct3D
- TechSoft internal graphic card test criteria independent of KeyCreator



Cutting Plane Improvements

- Undo/Redo Support
- Display On/Off Option
- Cut Edge and Cut Face Color Option



Clean Entities

The new Clean Entities function searches the file for corrupted entities data and repairs them.



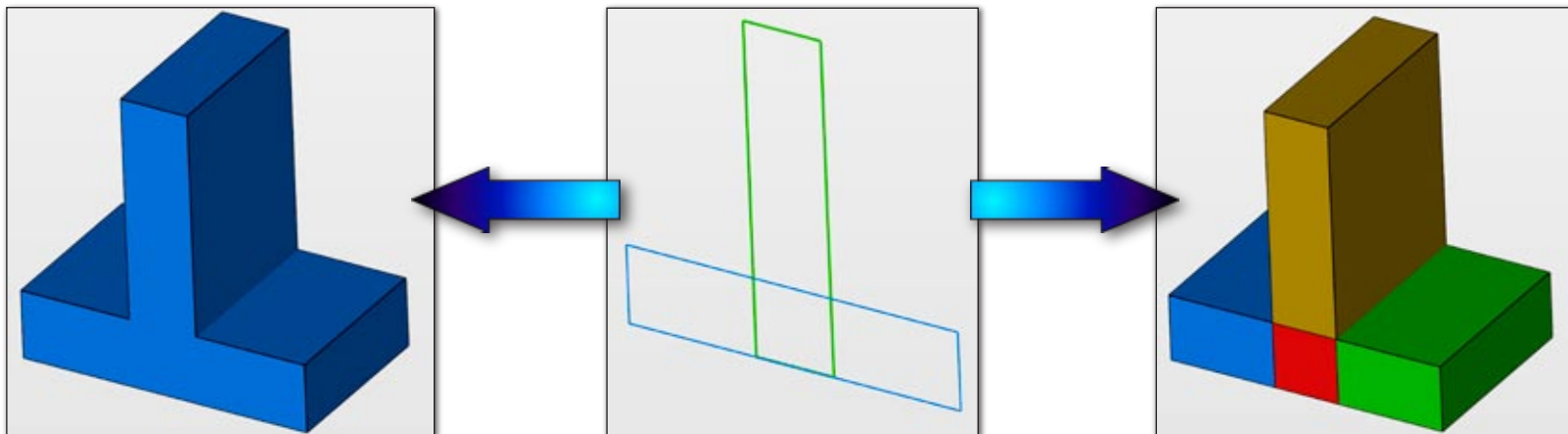
Primitive Block Anchor Points

- New anchor points options
 - 8 corners
 - 12 edge centers
 - 6 face centers & block center



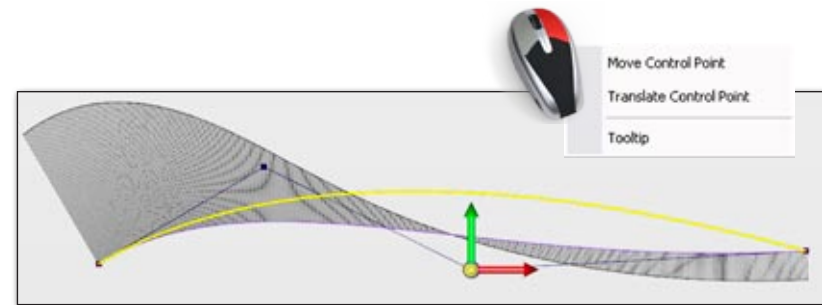
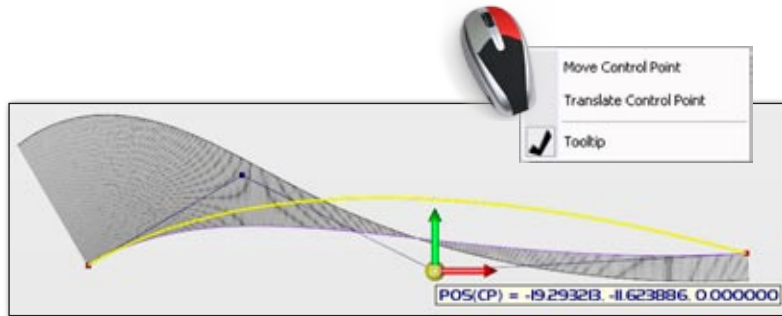
Merge Option For Solid Creation

- New option for merge/unite behavior when creating a solid from multiple entities



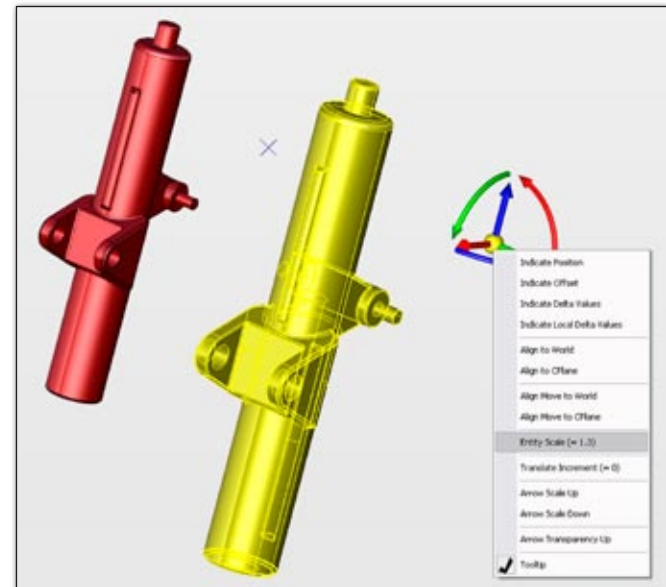
Deform Curve

- DynaHandle normal vector turns off for easier manipulation
- RMB toggle for tool tip ON/OFF display for better control/visualization



Dynamic Transform

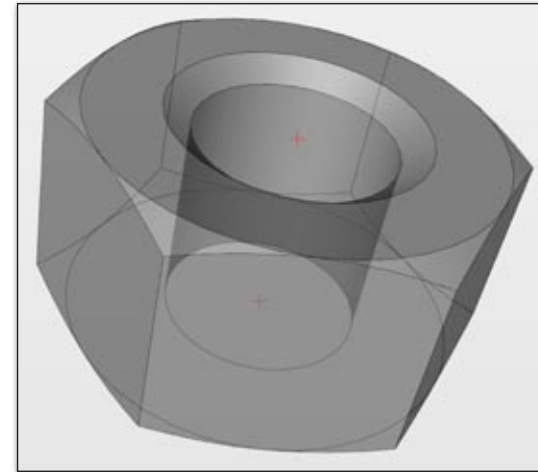
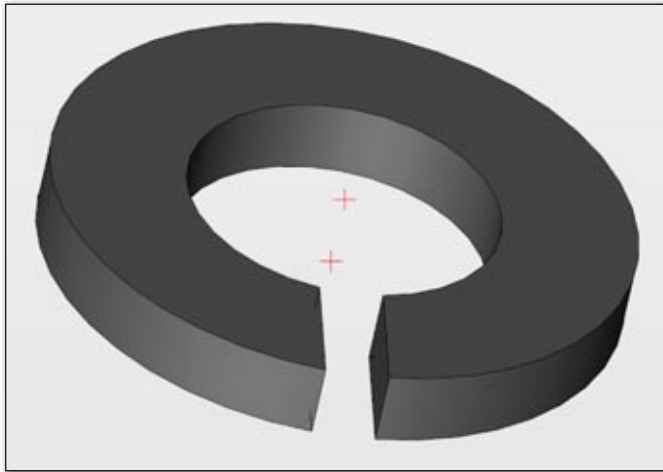
- RMB for Yellow Position sphere has a Scale option
- Enter scale value as you move/copy





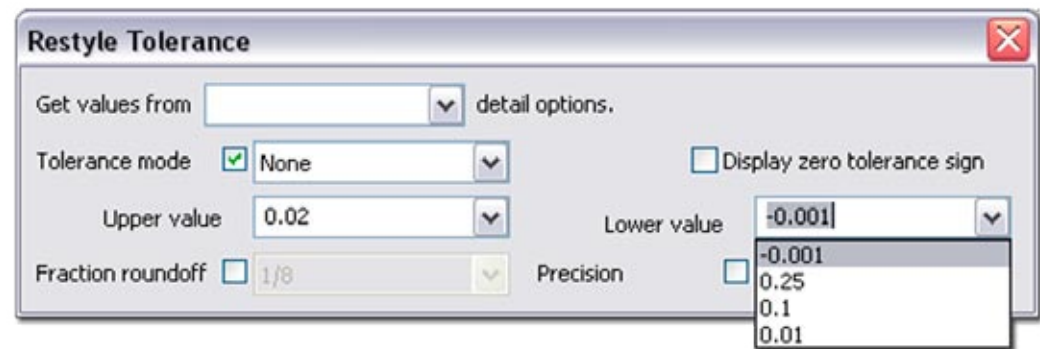
Improved Fastener Washer & Nut Placement

- Added placement toggle
 - Top
 - Bottom



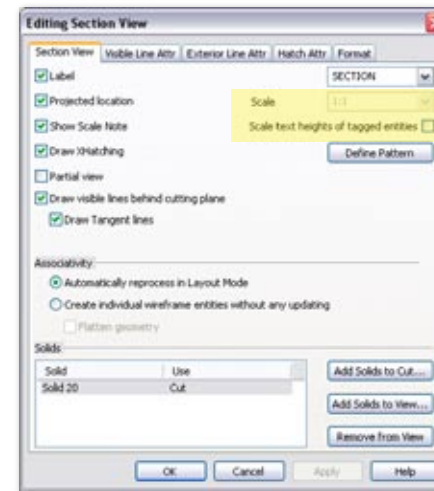
Restyle Tolerance

- Settings/Options are modal
 - Remembers new values in pull down menu



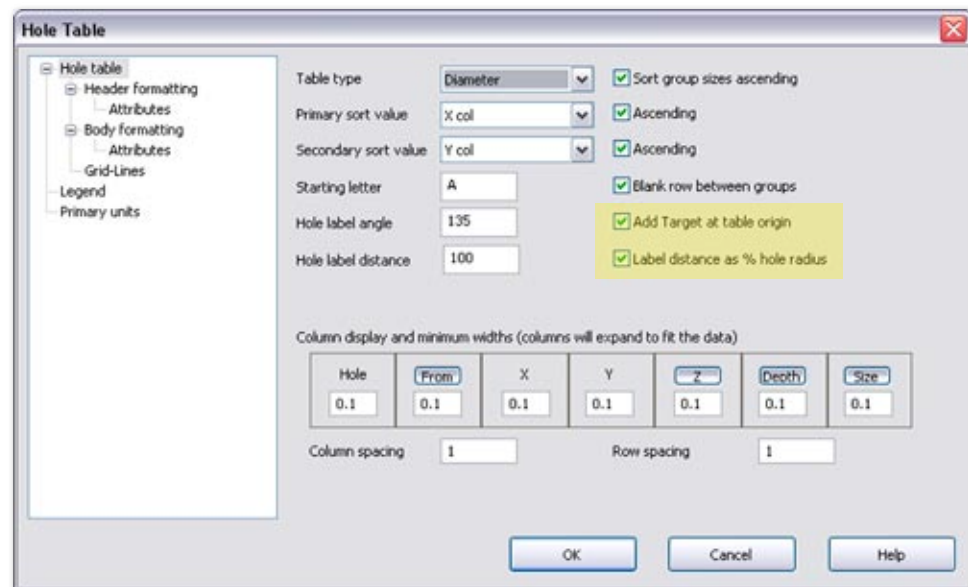
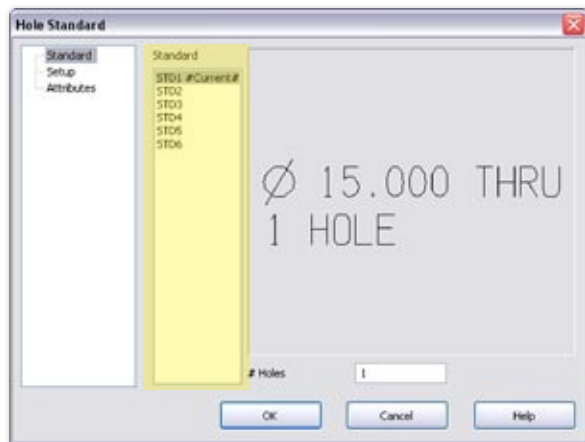
Improved Instance & Section Scaling

- Editing Section & Instance Scale options



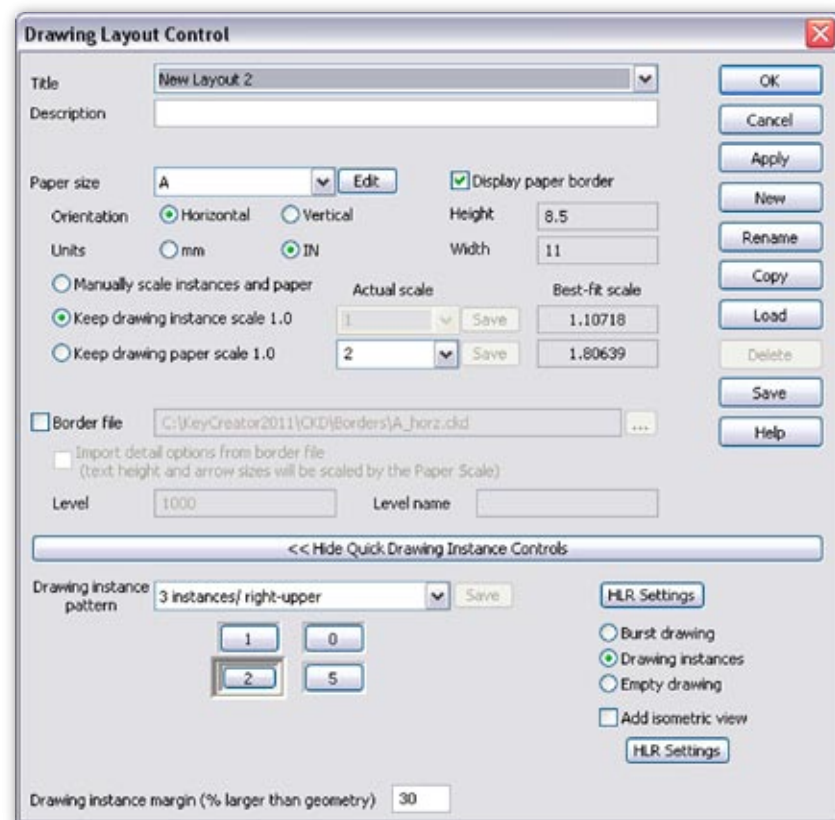
Improved Auto-Label & Hole Table

- Switching standards used in Autolabel
- Sorting column improved
- Target & distance boxes added



Improved Layout Dialog

- Reorganized
- Easier to use
 - Paper border
 - Actual and Best-fit scales
 - Primary instance button enhanced



KUBOTEK®
FREEDOM AND PRECISION



Kubotek USA, Inc.
2 Mount Royal Ave. Suite 500, Marlborough, MA 01752
Toll-free: 800-372-3872 www.kubotekusa.com